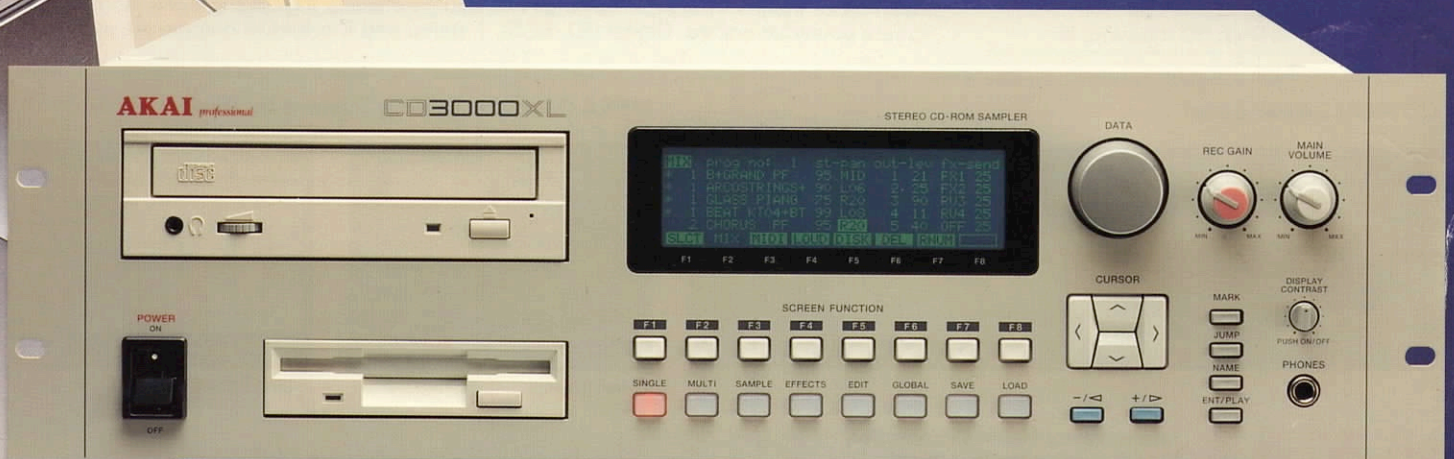


AKAI
professional

CD
3000
XL



MIDI Stereo CD-ROM Sampler

CD3000XL

Specifications

Sampling system 16 bit linear
Sampling rates 44.1/22.05kHz

Sampling time

92.13 seconds (mono 44.1kHz)
46.07 seconds (stereo 44.1kHz)
184.26 seconds (mono 22.05kHz)
92.13 seconds (stereo 22.05kHz)

Memory Standard 8Mb.
Expanded (Max) 32Mb by 72 pin SIMM

Polyphony 32 voice

Maximum sample number 255
Maximum program number 254

Filter Digital dynamic low-pass filter
(-12dB/octave with resonance)

Envelope generators 2 (1 multi stage)
LFOs 2

APM function Provided
Hard disk recording Provided
2nd LSI IB-304F (optional)
Multi effects EB16 (optional)

Display Back lit 40 characters x 8 lines (text)
240 x 64 dots (graphic)

Internal storage devices

Floppy disk: 3.5inch 2HD/2DD
Hard disk: KIT-SHD524 2.5inch HD
mounting kit (optional)
CD-ROM: Quad-speed

Connectors

Standard inputs:

1/4inch phone jack (balanced) x 2

Standard outputs:

1/4inch phone jack (unbalanced) x 2

Assignable independent outputs:

1/4inch phone jack (unbalanced) x 8

Digital input: RCA input x1

Digital output: RCA output x1

Headphone: 1/4inch stereo phone jack x1

Footswitch: 1/4inch phone jack x1

MIDI: DIN 5P IN x1, OUT x1, THRU x1

SCSI interface: 25 D-SUB x1

Power requirements

120VAC 60Hz 42w, 220-230/240VAC 50Hz

Dimensions

483mm(W) x 135mm(H) x 423mm(D)
(EIA 3U size)

Weight 9.2KG

Accessories AC Power Cable, Operator's Manual, MESA Disk x 1, SMF Demo Sequence Disk x 1, Sound Disk x 2, CD-ROM Akai Sound Library x 1

Options

IB-304F 2nd LSI board
EB16 Multi effects board
FMX008 8Mb Flash ROM
KIT-SHD524 2.5inch HD mounting kit

A flexible new addition to the world renowned 'S' Series family of professional digital samplers. The CD3000XL combines all the functions of the S3000XL sampler with a built-in quad-speed CD-ROM drive.

Like all the Akai S Series samplers, the CD3000XL allows you to record, play and process samples to the highest acoustic levels. They work to 44.1 kHz, 16 bit linear sampling standards with 64-times oversampling and 32 voice polyphony; musical fidelity is assured by the use of 28 bit internal processing. The S3000 series is the standard by which world professional sampling is judged, now Akai have expanded the musical possibilities by adding a quad-speed CD-ROM drive, allowing instant access to the huge range of sounds available on audio compact disc and CD-ROM. The CD3000XL comes with a disc from Akai's own legendary sound library.

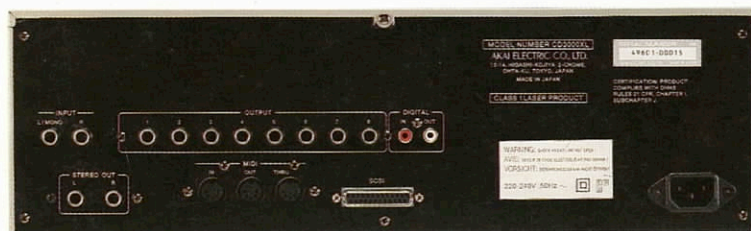
User interface refinements standard on the CD3000XL include the new Multimode feature which makes the set up of multitimbral and layered sounds easier. Up to 16 part multitimbrality can be achieved using Multimode; the parameters of each part can be set and assigned individually and can be made responsive to a different MIDI channel. One program can now be set up in multiple ways for different sound sequences without needing to alter or copy the original and you can edit the multi set-up while running the sequence so that changes to all the parts can be immediately assessed. When used with the optional EB16 4 channel digital effects board, a complete multitimbral sound composition can be executed and mixed entirely in the digital domain complete with effects, and routed direct to DAT or an Akai DR series hard disk recorder. In Multimode format, the EB16 allows each part with its own send level to be routed to one of four powerful processors, complete with its own effects bus. Editing facilities are extensive with 50 presets available for storing customised multi-effects set ups and the same number dedicated for reverbs. And when the program is saved to disk, the assigned effects set-up is saved as well. The EB16 also functions as a true studio-quality effects processor with two full channels of multi-effects plus two reverb channels. Multi-effects include distortion, EQ, ring modulation and a range of modulation effects such as chorus, phasing, flanging, pitch shifting, auto panning, delay and rotary speaker replication. The two effects channels are each capable of six simultaneous effects.

The CD3000XL is bundled with the MESA program (Modular Editing System by Akai), a graphic editing package developed by Akai for the Macintosh™ and intended for those musicians who want to control their sampler from the Macintosh™ screen. The MESA program gives a choice of pre-formatted screen control displays. Audio file transfer between incompatible systems is made simple by translation into AIFF and SD2 formats. MESA also includes a Wave editor and a File Manager for organising and saving to external storage systems. MESA is compatible with the Applescript program which can be used to create custom scripts and automate the burden of repetitive tasks.

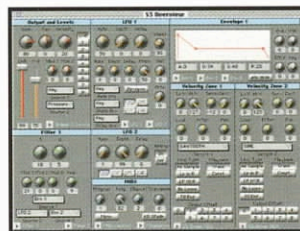
The CD3000XL is not just a sampler, it is also a powerful 32 voice polyphonic synthesizer, the specification including superb resonant lowpass filters, envelope generators, portamento, comprehensive LFOs (triangle, sawtooth and square waveforms) and extensive modulation abilities. Sophisticated manipulation of sound sources is facilitated by APM (Assignable Program Modulation) which routes any modulation source to any control input for precise processing control. Fitting the optional IB-304F board adds a second LSI to the system, opening up a second bank of filters (res/low, band & high pass), real-time digital EQ and a third multistage envelope generator with eight rate and level parameters. The addition of the IB-304F makes the CD3000XL almost as powerful as the top of the range S3200XL sampler, capable of the highest levels of tonal manipulation.

Standard on-board memory is 8Mb, expandable to a maximum of 32Mb through the use of readily available SIMMS modules and extra slots are fitted for an optional 2 x 8Mb of Flash ROM allowing your favourite sounds to be retained in memory even after the unit has been powered down. The direct to disk recording capability provides a stereo track which can be tuned, edited, copied and played alongside samples in RAM. With the capacity to record up to an hour of digital audio, this feature is ideal for triggering longer recordings such as backing vocals. These can be triggered over MIDI, from a keyboard, sequencer, MIDI file or the front panel. Recordings can also be chained together in Song mode to create powerful remixes. Digital I/O, SCSI, 1 stereo and 8 individual outputs are standard.

CD3000XL Rear panel



MESA (Modular Editing System by Akai)



Overview



Wave Editor

AKAI International Music Corporation
professional 1316 E. Lancaster Fort Worth
Texas 76102 USA
<http://www.akai.com/akaipro>